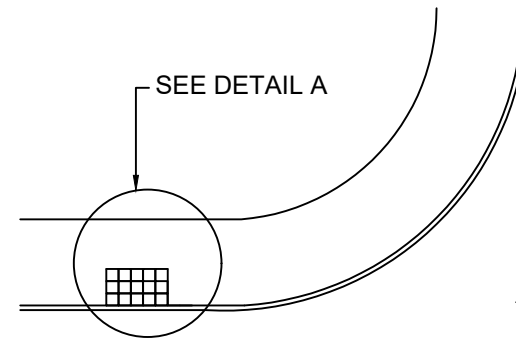
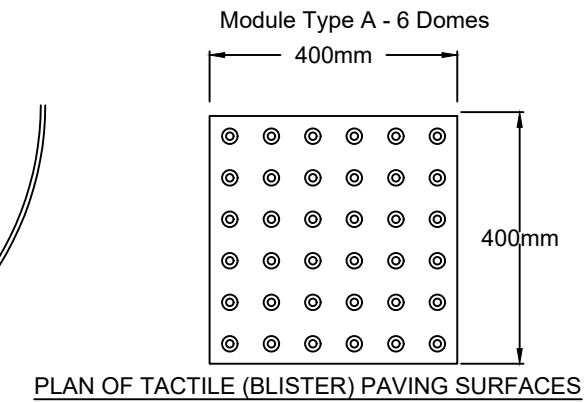


Section Trough Tactile Paving Slabs at Uncontrolled Pedestrian Crossings

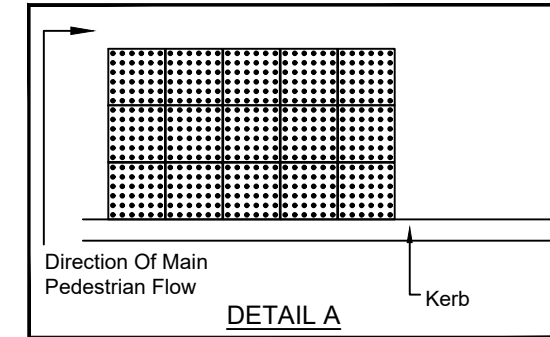
Tactile Paving Detail



LAYOUT OF TACTILE PAVING SLABS @ UNCONTROLLED PEDESTRIAN CROSSINGS



PLAN OF TACTILE (BLISTER) PAVING SURFACES

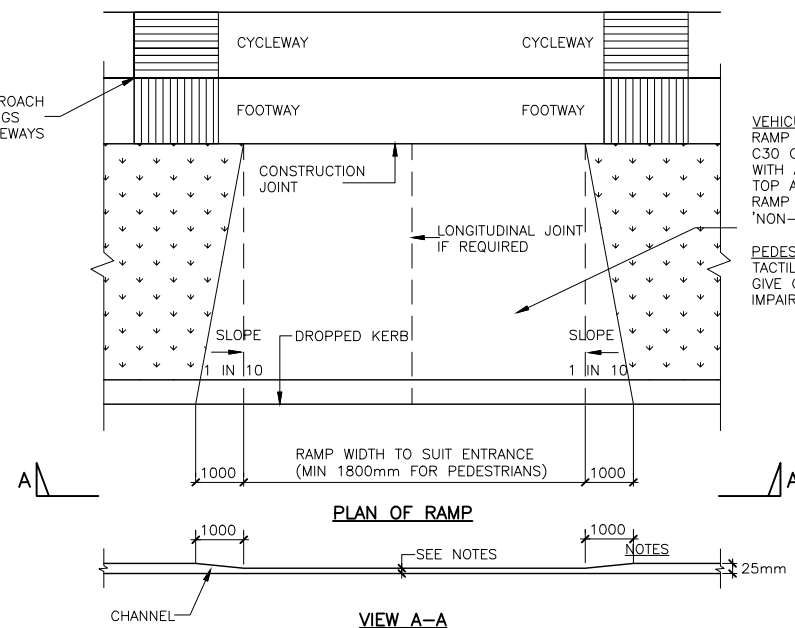


DETAIL A

Tactile Paving Detail

NOTES:  
All dimensions in metres unless specified.  
Do not scale from drawing.  
For any discrepancies found please consult with design office.  
This drawing should be read in conjunction with all contract drawings, documents and specifications.

TACTILE PAVING:  
TACTILE PAVING ON APPROACH TO PEDESTRIAN CROSSINGS ARE REQUIRED ON CYCLEWAYS AND FOOTWAYS



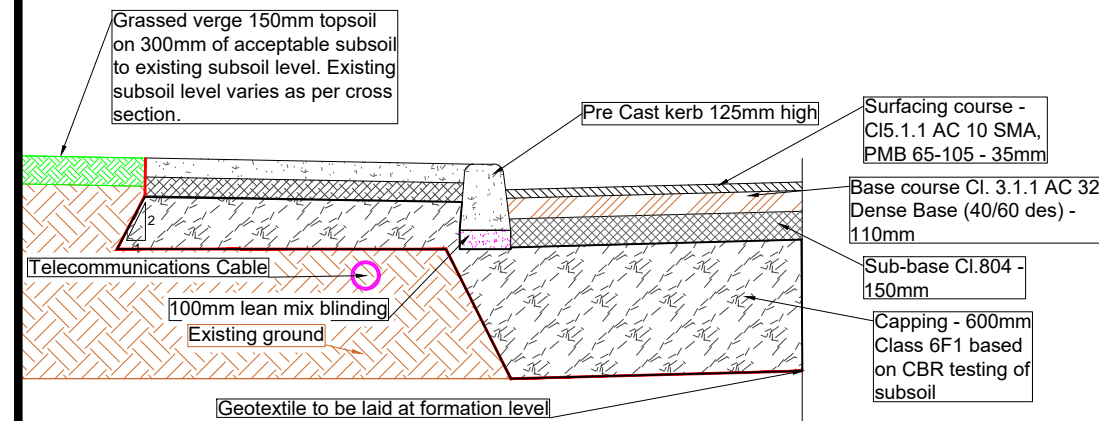
VIEW A-A

1. A RAISED LIP OF 25mm SHOULD BE USED FOR VEHICULAR ENTRANCES.
2. A RAISED LIP OF 0 - 6mm SHOULD BE USED FOR PEDESTRIAN CROSSINGS.
3. REFER TO RCD/1100/9 FOR PRE-CAST KERB DIMENSIONS
4. REFER TO RCD/1100/2 FOR IN-SITU CONCRETE KERB DIMENSIONS.
5. TACTILE PAVING IS TO BE PROVIDED AT ALL PEDESTRIAN CROSSINGS, ADVICE ON THE EXACT LOCATION AND DIMENSIONS CAN BE FOUND FROM THE UK DEPARTMENT FOR TRANSPORT, MOBILITY INCLUSION UNIT DOCUMENT, 'GUIDANCE ON THE USE OF TACTILE PAVING'

Typical Drop-Kerb Detail

VEHICULAR ACCESS:  
RAMP CONSTRUCTED FROM GRADE C30 CONCRETE 150mm THICK WITH A393 MESH REINFORCED TOP AND BOTTOM. SURFACE OF RAMP TO BE BRUSHED TOP FROM 'NON-SLIP' FINISH.

PEDESTRIAN CROSSINGS:  
TACTILE PAVING TO BE PROVIDED TO GIVE GUIDANCE TO VISUALLY IMPAIRED PEDESTRIANS.



Telecom Cable Location

Rev/By	Date	Description

Drawing Status: **PLANNING**  
NOT CERTIFIED FOR CONSTRUCTION

Project Title: Longview Estates Development

Drawing Title: Kerb Details

Client: Longview Estates Ltd



M.H.L. & Associates Ltd.  
Consulting Engineers

Carraig Mór House,  
10 High Street,  
Douglas Road,  
Cork  
Tel: 021-4840214  
Fax: 021-4840215  
E-Mail: info@mhl.ie

Designed: SM	Drawn: SFM	Checked: KM
Scale: N.T.S	Date: Nov 2019	
Job No: 17066HD	Drawing No: LHD_SCD_P03	Revision: